

OPERATOR'S MANUAL

LumaLite 120 VAC/AA Battery Powered

Includes:

LumaLite lamp assembly x 1

LumaLite Lamp 120 VAC power cable x 1

AA Batteries x 4

Table of Contents

Introduction.....	2
Safety Warnings.....	2
Tools/Materials Required.....	2
120 VAC Assembly.....	2
AA Battery Assembly.....	3
Troubleshooting Procedures.....	3
Contact/Customer Service.....	3

Introduction

This manual includes Safety Warnings, Instructions, and Troubleshooting options for the LumaLite desk lamp. Designed with your comfort and productivity in mind, LumaLite stands out for its thoughtful features and reliable performance. Please read through the entirety of this manual to ensure safe use, get the most out of your lamp, and shine light on all its possibilities.

Safety Warnings

Read all safety warnings and instructions provided within this manual. Failure to follow all instructions may result in electric shock, fire, and serious injury.

Work Area Safety

- Keep work area clean and free of clutter.
- Do not operate LumaLite in the presence of flammable liquids, gasses, or dust.
- Keep children away while handling electrical components.

Electrical Safety



- Never modify plugs or battery compartments. This increases the risk of electrical shock, fire, and serious injury.
- Do not expose Lumelite, cable, or power receptacles to rain or wet conditions.
- Do not utilize the power cord to carry, pull, or unplug the LumaLite.
- Use the Lumelite only with the AA Batteries or the power cable provided.

Tools/Materials Required

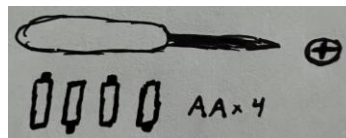
120 VAC Assembly

- LumaLite power cable (Included)



AA Battery Assembly

- #2 Phillips Head Screwdriver
- AA Batteries x 4 (Included)

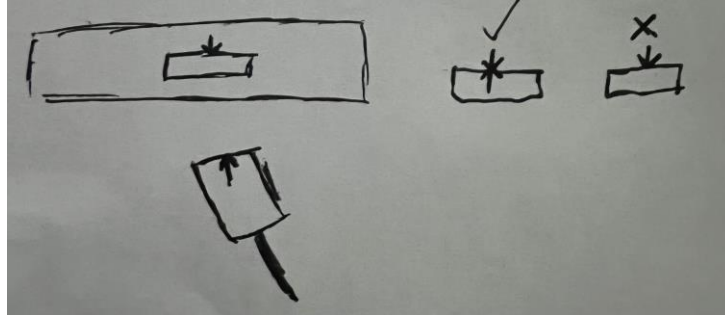


120 VAC Assembly

To reduce the risk of electrical shock, ensure the power cable is plugged into the LumaLite prior to plugging the power cable into a wall receptacle.

1. First, inspect the power cable for damaged outer sheathing/exposed wiring.
2. Next, remove temporary protective caps from both power cable connectors.

3. Then, inspect the power cable plugs for broken, bent, damaged connectors.
4. Then, install the circular end of the power cable into the 120 VAC input on the LumaLite.
 - a. Ensure a secure fit (arrow on plug shall be flush with exterior of connector)



Warning: Do not insert any foreign objects into outlet receptacles. Do not touch connector prongs while inserting into outlet receptacle.

5. Then, insert 120 VAC plug into a wall receptacle.
6. Finally, verify proper installation by cycling the LumaLite power switch to On/Off.

AA Battery Assembly

1. First, locate the LumaLite battery compartment cover on the bottom of the base.
2. Next, remove the screw securing the cover.
3. Then, raise the cover from the end with the screw and pull out slowly.
4. Then, following the illustration within the battery compartment, install the batteries in the proper orientation,
5. Then, slide the two tabs of the cover back into their respective locations and lower the cover.
6. Then, reinstall the screw securing the cover.
7. Finally, verify proper installation by cycling the LumaLite power switch to On/Off

Troubleshooting Procedures

120 VAC Powered

- Verify power cable connections
- Verify correct outlet receptacle output

AA Battery Powered

- Verify proper battery orientation
- Verify battery output (Utilize new batteries when possible)

- Verify security of battery compartment cover

Contact/Customer Service

Contact LumaCo with any comments, questions, or concerns regarding your LumaLite:

- <http://lumacolighting.com/>
- 757-xxx-xxxx
- LumeCo@LumaCo.com (Company Email)